



## Bari DL IP65 LED



Series of downlights. Lighting luminaires can be installed into modular ceilings.

**Materials:** powder painted white aluminum ring and housing; tempered glass. Polished and faceted aluminium reflector with a mirror finish

**Installation:** Into plaster cardboard and modular ceilings

**Power:** 230 V

### ELECTRICAL DATA

Light source	LED
Number of light sources	1
Voltage rating	220 ... 240 V
Light source included	Yes

### MECHANICAL DATA

Type of installation	Recessed
Housing material	Die cast aluminum

### INFORMATION

Colour	White
Operating temperature range	0 ... 35 °C
Rotated model	No

### CERTIFICATES

Degree of protection (IP)	IP65
Class of protection	I
Energy class	A++
CE	Yes
EAC	Yes

### LIGHT DATA

Luminaire's luminous efficiency	84 %
Light colour	White
Color rendering index	84
Light distribution	DI
Class of luminaire	I
Beam angle	50 °
Light output degradation	B10
Lumen maintenance	L90
Lifetime	> 60000 h
MacAdam	SDCM 3
Lamp Lumen Maintenance Factor (after 60 000h)	91 %

### OPTICAL DATA

Diffuser material	Transparent glass
Reflector	High gloss

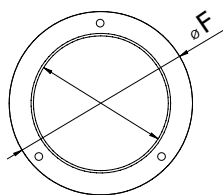
### AVAILABLE VARIANTS

Product code	Luminaire power [W]	Light source power [W]	Light source luminous flux [lm]	Luminaire luminous flux [lm]	Light source luminous efficacy [lm/W]	Luminaire's luminous efficacy [lm/W]	Colour temperature
PX4089569 DH001.1166.830.A000	15	1×15	1990	1670	166	111	3000K
PX4089590 DH001.1166.840.A000	15	1×15	2050	1720	171	115	4000K

## AVAILABE VARIANTS

Product code	Luminaire power [W]	Light source power [W]	Light source luminous flux [lm]	Luminaire luminous flux [lm]	Light source luminous efficacy [lm/W]	Luminaire's luminous efficacy [lm/W]	Colour temperature
PX4089576 DH002.1166.830.A000	21	1×21	2740	2300	152	110	3000K
PX4089597 DH002.1166.840.A000	21	1×21	2830	2380	157	113	4000K
PX4089583 DH003.1166.830.A000	29	1×29	3690	3090	142	107	3000K
PX4089604 DH003.1166.840.A000	29	1×29	3800	3190	146	110	4000K

## DIMENSIONS



H [mm]	F [mm]	G [mm]	D [mm]	E [mm]
130	245	180	212	140

H = Height / Depth | F = Outer diameter | G = Inner diameter | D = Installation width | E = Installation depth

