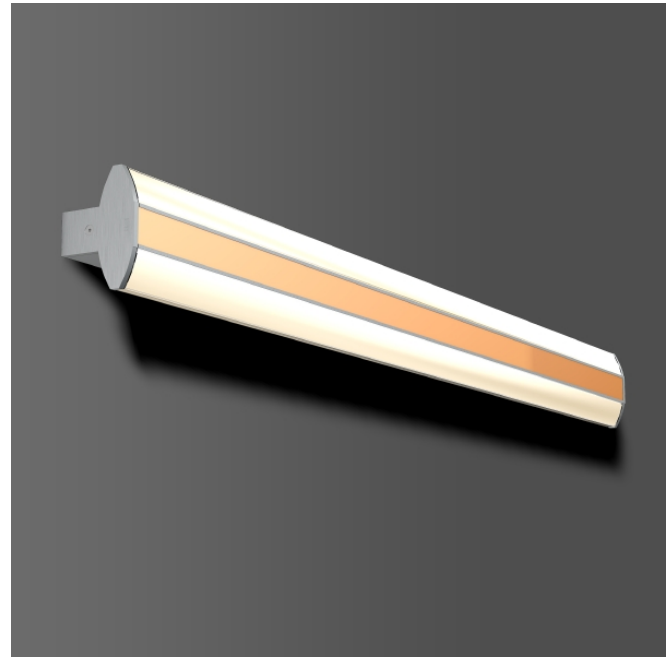


# Lavano

451191.000.1 | Ceiling and wall luminaires



Ceiling and wall luminaires  
4051859173311  
LED  
L 1140, B 109, H 80



Linear LED surface-mounted luminaire in an elegant design. Extruded aluminium profile base, lacquered. End caps aluminium, painted. Diffuser: plastic, opal, allows for brilliant glittering light along the lines of the ellipse. Two parallel diffusers with prismatic structure at the side for excellent light distribution. Suitable for Ceiling mounting, Wall (surface). Decorative element included.

## Colour

Colour anodised aluminium

## Dimensions

Length L 1.140 mm  
Width B 109 mm  
Height H 80 mm  
Weight 2,98 kg

## Lamp

Lamp LED  
Colour temperature 3000K  
Colour rendering index (CRI) 80  
Colour tolerance 3  
Rated life 50000 h (L90/B10)  
Photobiological safety according to EN 62471 Risk group 1

## Lighting technology

Colour temperature 3.000 K  
Rated luminous flux 5.150 lm  
Glare evaluation UGR (4H 8H) 1 24,9  
Beam angle 180° / 111°

## Electrical

Control gear Constant voltage supply  
Voltage 220 - 240 V / 50 - 60 Hz  
Luminaires on B10A fuse 5  
Luminaires on B16A fuse 9  
Luminaires on C10A fuse 9  
Luminaires on C16A fuse 15  
Inrush current / Inrush current duration 62 A / 220  $\mu$ s  
Ripple current / Flicker 10 %  
System power 47 W  
Luminaire efficacy 110 lm/W  
Total harmonic distortion 10 %  
Power factor 0,98

## Approbations

Type of protection IP 40  
Note: Type of Protection IP 40  
Protection class I  
Filament test 650°C - 30 seconds  
Impact resistance IK02 (0,20 Joule)  
Safety marks F-mark  
ULOR 46,6 %  
Conformity mark CE, EAC  
CIE Flux Code / CEN Flux Code 34 59 83 53 100  
Energieeffizienzklasse 2019/2015 E