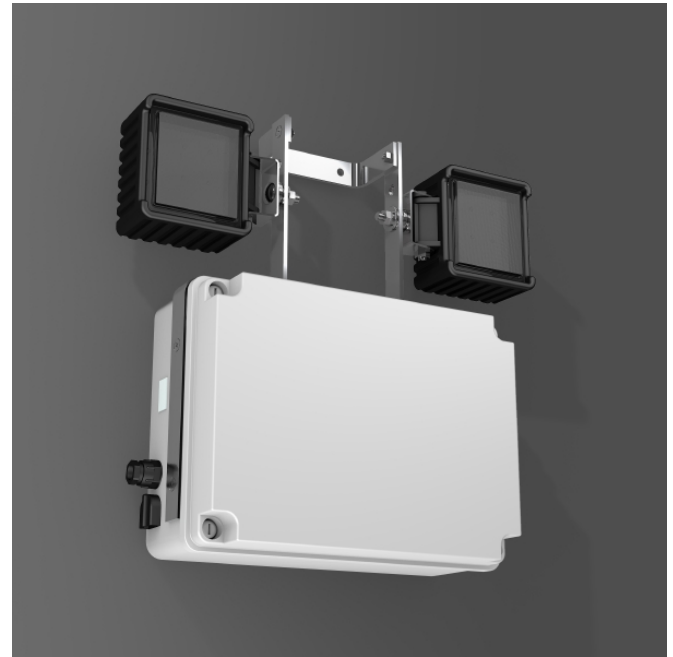
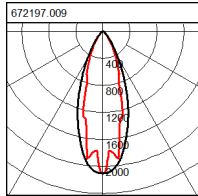
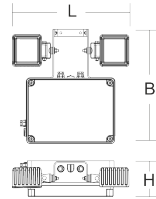


Powerbox Flood

672197.009 | Self-contained safety luminaires

Safety stand spotlight
4051859169512
LED
L 395, B 128, H 470



Housing polycarbonate, grey, spotlight heads can be swivelled to illuminate escape routes or surfaces, self-monitoring (auto-test) with diagnostics and control programs for charging and consumer functions. With handle, suitable for mobile use or fixed installation. LED lamps and Pb batteries included.

Emergency lighting

Emergency luminaire	with integrated battery (self-contained)
Battery Option	Pb
Operating mode	Combined NL readiness
Monitoring	Automatic self-test
Luminaire flux Mains/Emergency	2400 lm
Duration time	3 h

Colour

Colour	grey
--------	------

Dimensions

Length L	395 mm
Width B	128 mm
Height H	470 mm
Weight	4,8 kg

Lamp

Lamp 1	LED
Colour temperature lamp 1	6500K
Colour rendering index (CRI) 1	78

Lighting technology

Colour temperature	6.500 K
Rated luminous flux	2.400 lm
Glare evaluation UGR (4H 8H) 1	19,9
Beam angle	30° / 40°

Electrical

Voltage	230 V / 50 - 60 Hz
System power, emergency	36 W
System power	0,1 W
Luminaire efficacy	24.000 lm/W

Approbations

Type of Protection	IP 54
Protection Class	I
Glow Wire Test	650°C - 30 seconds
Impact Protection	IK03 (0,35 Joule)
Safety marks	F-mark
ULOR	1,7
Trade mark	CE
CIE Flux Code / CEN Flux Code	92 98 99 98 100
Energy efficiency class conventional lamp	Mark not necessary
Energy efficiency class LED	Mark not necessary